

# *firstAIR*

Compressors! No compromises.

## FAS SERIES

Screw Air Compressor Range



## About firstAir

firstAir offers air-cooled screw compressors in the power range from 3 to 90 kW at an operating pressure of 8 and 10 bar(g).

The compressors are designed for industrial use and show their strength in continuous operation. Equipped with drive motors of energy efficiency class IE3, economical operation is guaranteed. In addition, firstAir also offers systems with energy-saving speed control.

The standard systems of the FAS series can also be expanded:

- ▶ Air receiver (11 bar) ▶ Refrigeration dryer ▶ Pre- and afterfiltering ▶ Condensate drain



FAS 3 45



FAS SC 7 45



FAS AT 115



FAS (SC) 55-90

For the FAS series, compressor airends with above-average performance have been developed, designed and produced which, in combination with our high-quality thermostatic valves, suction regulators and separators, contribute to the reliability and longevity of the product. Our highly efficient compressor stages in combination with IE3 electric motors enable the screw compressors to achieve a high technological standard and high efficiency.

## firstAir FAS - Features & Benefits



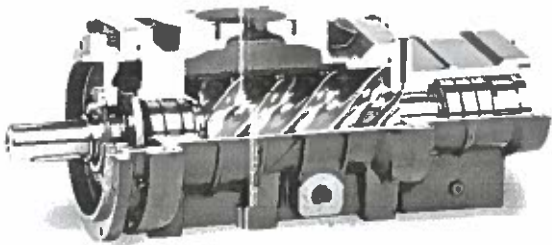
- Compact and accessible design
- Reliable EUCOMP air end technology
- IE3 premium efficiency drive
- Optimum belt tension
- Generous designed aluminium cooler



- Small footprint + easy to maintain
- Proven technology with high volume flow
- Developed for high loads
- Low speed operation
- Ambient temperatures up to 45°C



- Quick installation and low service costs
- High reliability for demanding industries
- Durable and energy cost saving operation
- Long lifetime
- Risk free operation



### EXCELLENT QUALITY

The selection of high-quality components combined with decades of experience in the construction of compressor stages ensures a long service life with consistently high efficiency.

### CONTROL

With the intelligent compressor control, you have full control over the operating status: maintenance indicator, low ambient temperature warning and fault indication.

The control also features fully automatic full load, idle and intermittent control as well as remote on/off and direction control.



### 5 YEARS OF WARRANTY

We trust in the quality of our products and therefore offer you more than the legal warranty requires - 5 years of carefreeness with firstCAir.

# FAS SC

screw compressors with energy saving speed control.

Machine Model FAS SC			7	11	15	22	30	37	45	55	75	90	
FAD	7 bar	m <sup>3</sup> /min	0,61	0,90	1,15	1,51	2,20	2,44	3,12	4,28	5,52	6,40	
			1,21	1,80	2,30	3,78	5,51	6,10	7,80	10,70	13,80	16,00	
	8 bar	m <sup>3</sup> /min	0,58	0,87	1,06	1,45	2,08	2,38	3,04	3,84	5,20	6,08	
			1,15	1,74	2,11	3,62	5,20	5,94	7,60	9,60	13,00	15,20	
	10 bar	m <sup>3</sup> /min	0,53	0,76	0,99	1,30	1,83	2,04	2,76	3,52	4,68	5,44	
			1,05	1,52	1,98	3,25	4,57	5,10	6,90	8,80	11,70	13,60	
Drive type			Belt drive						Direct drive				
Power			kW	7,5	11	15	22	30	37	45	55	75	90
Electrical motor			Starting method	Typ Inverter									
Voltage / Frequency			V/Hz	230/60*						440/60*			
Noise level			dBA	68 ± 3	68 ± 3	70 ± 3	70 ± 3	72 ± 3	72 ± 3	75 ± 3	75 ± 3	75 ± 3	75 ± 3
Discharge temperature			°C	Ambient temperature + 15									
Connection outlet				G3/4	G3/4	G3/4	G1 1/4	G1 1/2	G1 1/2	G2	G2	G2	G2
Dimensions	Length (mm)		(mm)	880	880	960	1140	1000	1000	1400	2250	2250	2250
	Width (mm)		(mm)	880	880	930	880	1250	1250	1100	1344	1344	1344
	Height (mm)		(mm)	1075	1075	1075	1260	1310	1310	1600	1694	1694	1694
	Weight (kg)		(kg)	300	320	425	600	900	930	1080	2150	2250	2450

The data and performance were recorded in accordance with standard ISO 1217 Annex C – The sound level was measured in accordance with PNEURDP/CAGI standard.

# FAS

firstAir screw compressors with fixed speed. FAS series is available ex works as 10 bar version.

Machine Model		3	4	6	7	11	15	18	22	30	37	45	55	75	90	
Cooling Type		Air-cooled														
Transmission method		Belt driven										Direct drive				
FAD	8 bar (g)	m³/min	0,36	0,52	0,76	1,15	1,74	2,11	2,98	3,62	5,20	5,94	7,60	9,60	13,00	15,20
	10 bar (g)	m³/min	0,32	0,47	0,70	1,05	1,52	1,98	2,67	3,25	4,57	5,10	6,90	8,80	11,70	13,60
Power	kW · Hp	3	4	5,5	7,5	11	15	18,5	22	30	37	45	55	75		
Noise level	dB(A)		65 ± 3		68 ± 3			70 ± 3			72 ± 3		75 ± 3			
Starting method	Type	Star/Delta starting														
Voltage/Frequency	V/Hz	380/400/415V, 50Hz										380/400/415V, 50Hz				
Protection Level	Class	IP55														
Insulation Class	Type	F														
Drive Motor Efficiency	Type	IE 3														
Discharge temperature	°C	Ambient temperature +15														
Air Outlet		G1/2	G1/2	G1/2	G3/4	G3/4	G3/4	G1 1/4	G1 1/4	G1 1/2	G1 1/2	G2	G2	G2	G2	
Standard type FAS	Length	mm	660	660	660	800	880	880	1050	1050	1000	1000	1400	2250	2250	2250
	Width	mm	600	600	600	800	830	830	880	880	1250	1250	1100	1344	1344	1344
	Height	mm	890	890	890	995	1075	1075	1260	1260	1310	1310	1600	1694	1694	1694
	Weight	kg	220	230	240	280	300	400	500	570	850	880	1080	2150	2250	2450
Configuration parameters Air receiver model FAS-R	Connection outlet		G1/2	G1/2	G1/2	G3/4	G3/4	G3/4	G1 1/4	G1 1/4	G1 1/2	G1 1/2	G2	G2	G2	G2
	Tank capacity	lit	200	200	200	270	500	270	500	270	500					
	Length	mm	1500	1500	1500	1400	2000	1450	2000	1450	2000					
	Width	mm	700	700	700	900	900	900	900	900	900					
	Height	mm	1550	1550	1550	1800	1800	1900	1900	1900	1900					
	Weight	kg	335	345	355	460	505	480	525	580	625					
Air receiver + dryer model FAS-AT	Connection outlet		G1/2	G1/2	G1/2	G3/4	G3/4	G3/4	G3/4	G3/4	G3/4					
	Tank capacity	lit	200	200	200	270	500	270	500	270	500					
	Length	mm	1500	1500	1500	1500	2000	1500	2000	1500	2000					
	Width	mm	700	700	700	900	900	900	900	900	900					
	Height	mm	1550	1550	1550	1800	1800	1900	1900	1900	1900					
Weight	kg	425	435	445	560	605	580	625	680	725						
Connection outlet		G1/2	G1/2	G1/2	G3/4	G3/4	G3/4	G3/4	G3/4	G3/4						

The data and performance were recorded in accordance with standard ISO Annex C 1217 - The sound level was measured in accordance with PNEUROPI/CAGI standard.

# Model: Focus 90-315 kW

## Focus

The machines of the FOCUS series are designed for optimum efficiency. This is achieved by a direct drive between the motor and the compressor stage. In addition, the compressor stage is designed precisely for the operating pressure, so that the compressor stage works with the highest efficiency.

### Advantages for our customers:

- ✓ No energy losses due to the direct drive compared to machines that use a gearbox between the motor and the compressor stage
- ✓ No additional maintenance costs for a gearbox
- ✓ Optimal design of the compressor stage to the operating pressure and thus an operation with the highest possible efficiency with the lowest possible energy consumption
- ✓ Manageable maintenance costs due to maintenance intervals of 4,000 operating hours

## Strong

Our large machines > 75 kW of the STRONG series are not only directly driven and speed-controlled, but also all equipped as standard with IE4 efficiency permanent magnet motors.

### Advantages for our customers:

- ✓ No energy losses due to the direct drive compared to machines that use a gearbox between the motor and the compressor stage
- ✓ No additional maintenance costs for a gearbox
- ✓ Due to the speed control, the machine automatically adapts to the required compressed air consumption automatically
- ✓ The use of permanent magnet motors with the highest efficiency class IE4 guarantees highest efficiency over the entire control range. In comparison to conventional compressors, the STRONG series compressor works with optimum efficiency while operating across the compression range.
- ✓ Manageable maintenance costs due to maintenance intervals of 4,000 operating hours

**Warranty: 2 years or 5 years with our extended warranty program**

Realistic and plannable service costs and no unexpected surprises by unplanned repairs



# Model: Strong 90-250 kW

## Controller. Focus & Strong.

Compressors of the FOCUS and STRONG series are equipped as standard with our 6080 control unit.

### Advantages for our customers:

- ✓ 6 digital inputs and 6 relay outputs
- ✓ Large color 7" touchscreen
- ✓ Integrated operation as master or slave with up to 15 other compressors
- ✓ Storage temperature monitoring and phase sequence monitoring
- ✓ Monitoring and display of the current consumption as well as display of the accumulated energy requirement
- ✓ MODBUS interface
- ✓ Remote on / off
- ✓ Assignment of the inputs / outputs with different messages

### Oil injected screw compressors Focus

Model	Nominal Power	Pressure range	Free Air Delivery			Dimension			Weight	Noise
			@8bar(g)	@10bar(g)	@12bar(g)	Length	Width	Height		
	[kW]	[bar]	[m <sup>3</sup> /min]			[mm]	[mm]	[mm]	[kg]	[dB(A)]
Focus 90	90	8-12	15,40	11,50	11,40	2.100	1.300	1.900	2.080	65 +/-2
Focus 110	110	8-12	18,90	14,70	14,60	2.800	1.900	1.690	2.850	68 +/-2
Focus 132	132	8-12	20,80	18,80	18,60	2.800	1.900	1.690	3.200	75 +/-2
Focus 160	160	8-12	23,90	20,60	20,40	3.200	2.030	2.100	3.850	75 +/-2
Focus 200	200	8-12	30,00	23,80	23,40	3.500	2.100	2.100	4.500	82 +/-2
Focus 250	250	8-12	40,70	upon request	upon request	3.820	2.100	2.165	4.800	85 +/-2
Focus 315	315	8-12	upon request	upon request	upon request	3.800	2.000	2.100	7.200	82 +/-2

Performance data acc. ISO 1217, Annexe C, Technical modifications reserved

### Oil injected screw compressors Strong

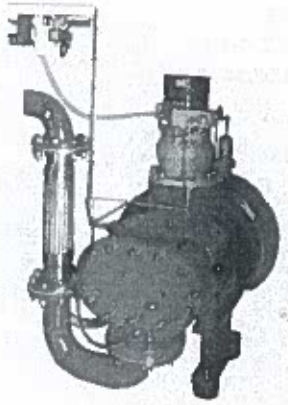
Model	Nominal Power	Pressure range	Free Air Delivery			Dimension			Weight	Noise
			@8bar(g)	@10bar(g)	@12bar(g)	Length	Width	Height		
	[kW]	[bar]	[m <sup>3</sup> /min]			[mm]	[mm]	[mm]	[kg]	[dB(A)]
Strong 90	90	8-12	16,53	13,04	12,11	2.500	1.750	1.800	2.450	75 +/-2
Strong 110	110	8-12	19,81	16,43	14,21	2.500	1.750	1.800	2.500	75 +/-2
Strong 132	132	8-12	22,47	19,65	16,32	2.500	1.750	1.800	2.600	75 +/-2
Strong 160	160	8-12	24,30	20,92	18,89	3.230	2.060	2.100	3.850	75 +/-2
Strong 200	200	8-12	30,48	24,09	20,64	3.500	2.100	2.100	4.500	82 +/-2
Strong 250	250	8-12	51,38	37,38	upon request	3.860	2.160	2.660	6.000	82 +/-2

Performance data acc. ISO 1217, Annexe C, Technical modifications reserved

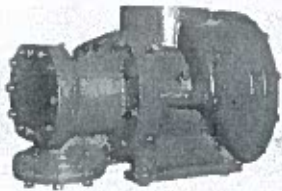
# Model: Strong

## The Powerful

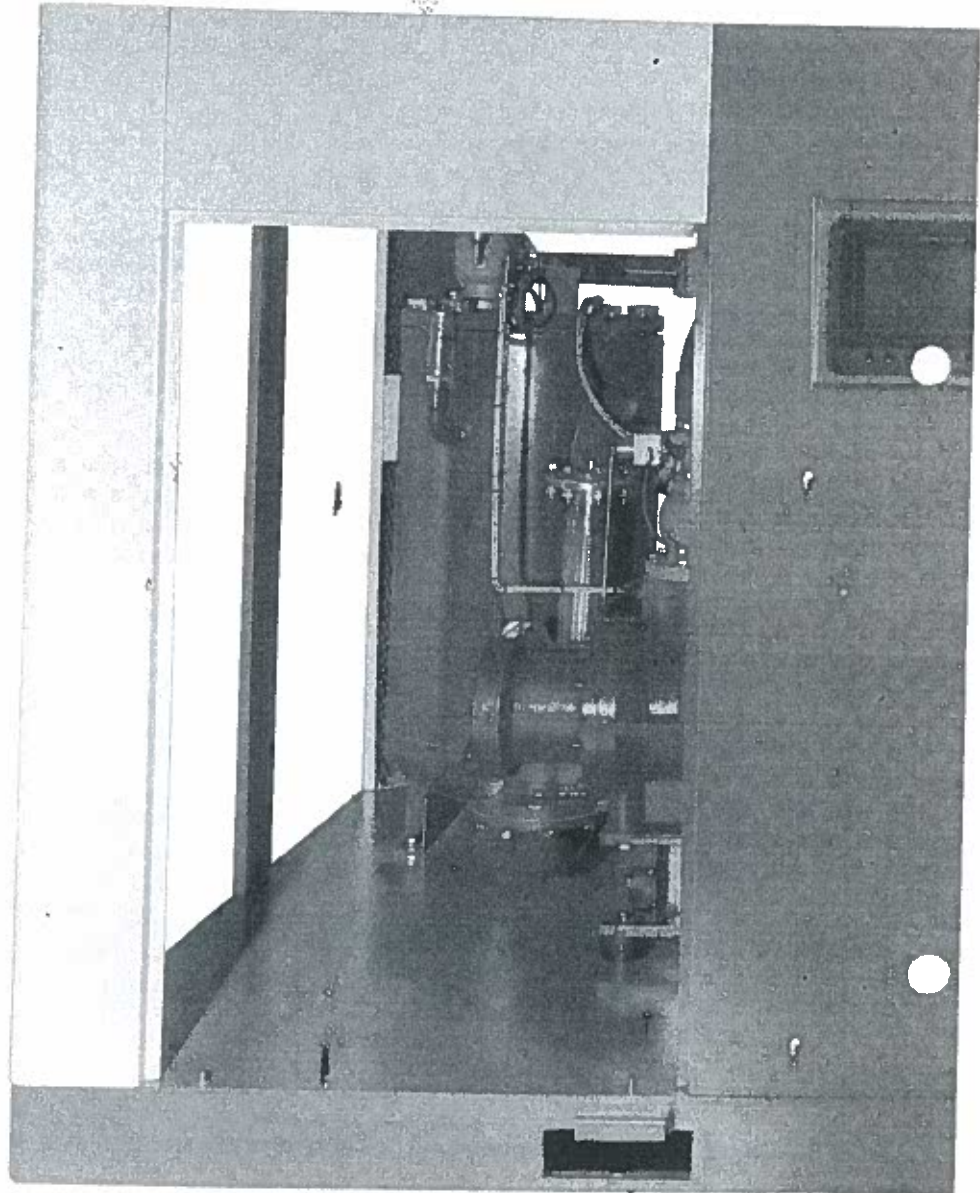
Oil injected screw compressors 90-250 kW



■ Fixed piping for a long service life

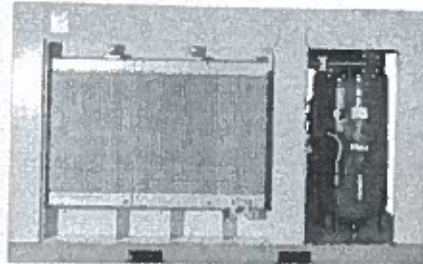


■ High-performance compressor air end for highly efficient compression



Oversized coolers for excellent cooling

Oil tank with integrated highly efficient oil fine separation

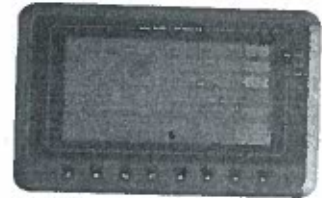
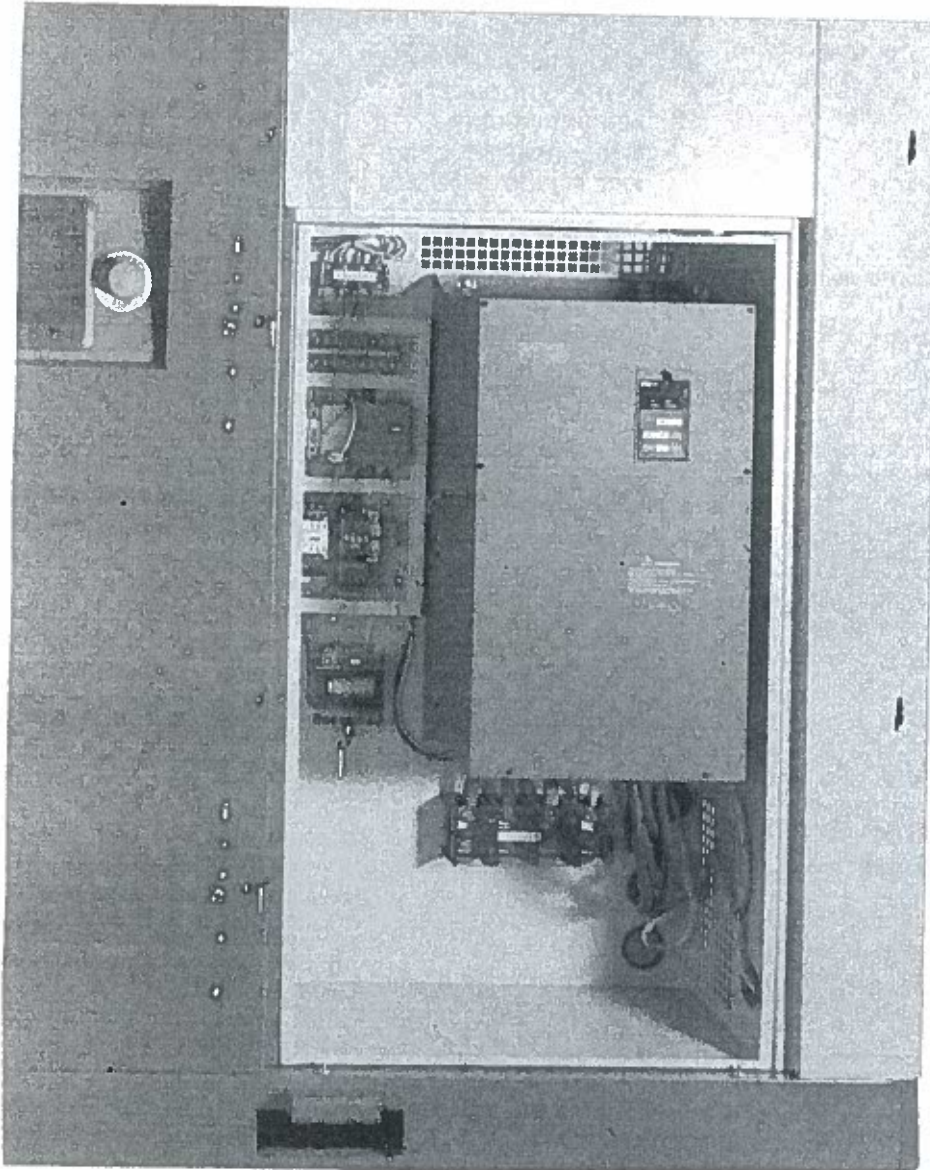




# Model: Focus

## The Economical

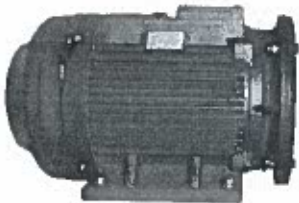
Oil injected screw compressors 90-315 kW



Intelligent controller with many options



Powerful frequency converter for optimal operation

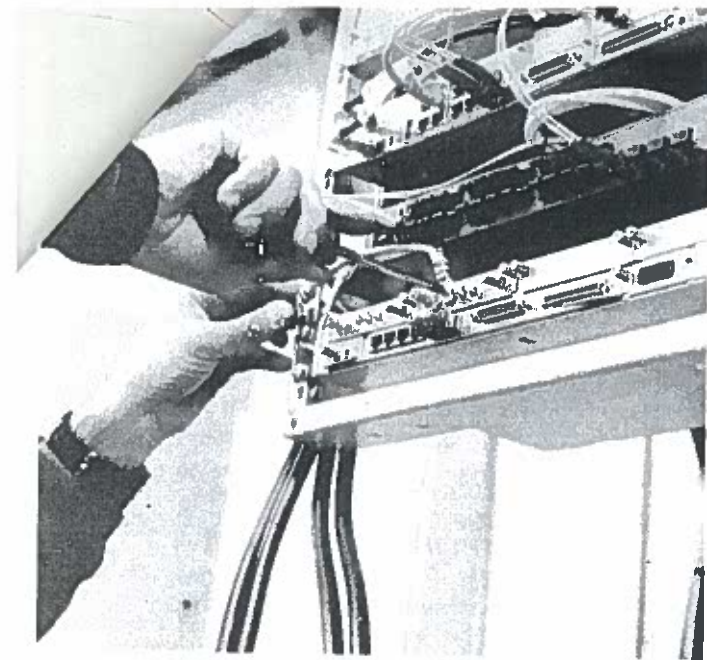


High efficient permanent magnet motor



**Warranty: 2 years or 5 years with our extended warranty program**

Realistic and plannable service costs and no unexpected surprises by unplanned repairs



## Maintenance

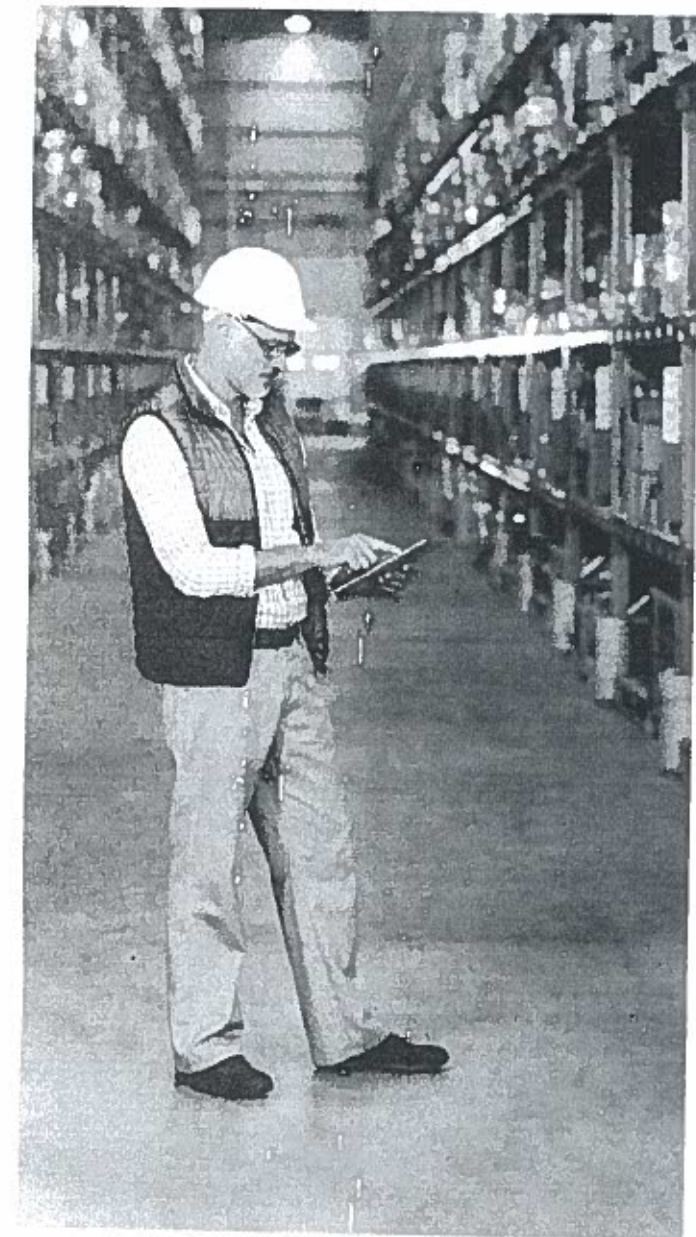
**With our SCC compressors you are always on the safe side. Long maintenance intervals reduce your costs for maintenance to a minimum.**

Our compressors are designed to offer you a high reliability of operation to make sure you have no unnecessary stand still in your production.

Our maintenance plans give you a perfect overview about costs and give you safety in cost planning.

The parts for the necessary maintenance are packed together in maintenance kits. So we make sure you have all parts to hand and nothing is forgotten. On top of that you have a price advantage by ordering kits compared with ordering parts.

In case you need to change a part you can identify it easily with our customer friendly parts lists.



---

## Warranty

**All our compressors have a 2 year warranty as standard. So you are safe and in control of your costs.**

Additionally we offer in cooperation with our service partners a 5 year extended warranty. By paying a small fee you can minimise your risk of unplanned costs. Speak with your SCC representative today for further details.